




# MI & ME OPTIONS

Solutions which fit your needs



The Manitou group designs, produces and distributes a wide range of handling machinery recognized for their **safety, performances** and **reliability**.

Our engineering teams, made up of more than 200 engineers and technicians, put all their energy and their capacity to innovate and to develop new solutions. They are here to listen and to understand your needs and bring you the best adapted answer.

Beyond the standard machine, our Special Affairs team is at your disposal, to collect, to analyze with you your problem and to suggest a custom-made solution.

All our technical solutions benefit from a ratification by ourselves, associated with certificates with the manufacturer warranty.

In this catalog, we are pleased to present options developed by our Special Affairs department in collaboration with our workshop specialised in industrial trucks, OEM Management.

These options are available for all MI & ME forklifts sold in Europe.

You will have to add one week to your lead time.

No extra cost for development will be charged for these options.

***A specific require ?***

If you have a special request, our Special Affairs team is at your disposal. Do not hesitate to contact them!



# Contents

## **SAFETY**

Overhead guard	New	4
Safety valve	New	5
Cut-off on seat-belt		6
Extinguisher	New	7
Roof protection	New	8
Rotating beacon		9
LED Rotating beacon	New	10
Speed limiter		11
Spark arrestor		12
R&L outside mirrors	New	13
Back-up buzzer	New	14

## **COMFORT**

Load accumulator	New	15
Radio	New	16
Swivel seat		17

## **PRODUCTIVITY**

LPG gauge		18
Gas tank		19
Double cylinder support		20
5th electric way	New	21

## **DURABILITY**

Engine cut-off		22
Prefilter		23
Turbo 3 prefilter		24
Drive shaft protection	New	25

## **OTHERS**

Customisation		26
---------------	--	----

# Overhead guard

September 2015

## Description

Front and rear windscreens equipped with wipers.

## Customer benefits

Improved driver visibility, comfort and safety.



## Activities

All indoor & outdoor handling activities.

## Products compatibility



ME3



ME4

# Safety valve

September 2015

## Description

System combined with an emergency stop button. It allows to stop the overrun of the engine when this working in petro-chemical environment.

Located between the air filter and the intake manifold. It closes the air inlet with a controlled valve.



## Customer benefits

Avoid risk of flames and/or explosion.

## Activities

Recommended for oil and chemical industries.

## Products compatibility



MI-D

# Cut-off on seat-belt

September 2014

## Description

System planned to automatically cut off the truck transmission when the seat-belt is not fasten.



## Customer benefits

Improved driver safety.

**Activities** All handling activities.

## Products compatibility





# Extinguisher

September 2015

## Description

2 kg extinguisher located behind the seat.



## Customer benefits

In case of fire, the driver can extinguish the fire.

Safety for the operator and its machine.

## Activities

All handling activities.

## Products compatibility



MI-G



MI-D



ME3



ME4

# Roof protection

September 2015

## Description

Protection bar placed on the roof of the machine.

## Customer benefits

Safety feature during loading/unloading pallets.



## Activities

Recommended for handling at great heights.

## Products compatibility



MI-G



MI-D



ME3



ME4



# Rotating beacon

September 2014

## Description

Rotating beacon installed on the overhea guard visible from all directions.



## Customer benefits

Indicate the presence of the forklift truck to people moving nearby for enhanced awareness.

## Activities

All handling activities.

## Products compatibility



MI-G



MI-D



ME3



ME4

# LED rotating beacon

September 2015

## Description

LED technology rotating light system installed on the overhead guard visible from all directions.



## Customer benefits

Indicate the presence of the forklift truck to people moving nearby and to enhance awareness.

Less energy consumption compared to traditional lights.

**Activities** All handling activities.

## Products compatibility



# Speed limiter

September 2014

## Description

System planned to automatically limit the speed of the truck to a chosen level.



## Customer benefits

Improved safety around the truck.  
Fuel saving and reduced pollution.

## Activities

All handling activities.

## Products compatibility



# Spark arrestor

September 2014

## Description

System located at the end of the exhaust pipe to stop white-hot particles produced by the heat engine and released by the exhaust system.



## Customer benefits

Useful to prevent any risk of fire.

## Activities

High-risk areas: airports, chemical, oil and wood industries, and any inflammable products...

## Products compatibility



# Outside mirrors R&L

September 2015

## Description

Rear-view mirrors located on the front pillars of the cabin.  
4 positions for enhanced driver visibility.



## Customer benefits

Better visibility.

## Activities

All handling activities.

## Products compatibility



# Back-up buzzer

September 2015

## Description

Back-up buzzer.  
Different sound from the standard.  
Located outside on the top rear section cab.



## Customer benefits

Audible warning of a working machine in the area.  
Reduce effectively the sound «pollution» compared to a classic buzzer.  
The signal is spread only in the danger zone and its immediate area.

## Activities

All handling activities.

## Products compatibility





# Load accumulator

September 2015

## Description

Accumulator located in the lift hydraulic system.  
Shock absorber effect.



## Customer benefits

Absorbs shocks when driving on uneven ground.  
Reduces risk of load loss.  
Driver's comfort increased.

## Activities

All handling activities.

## Products compatibility



# Radio

September 2015

## Description

Radio fixed in the cab.  
Speakers located in both sides of top rear section of the cabin.

## Customer benefits

Make the working day more pleasant.  
Driver's comfort increased.



## Activities

All handling activities.

## Products compatibility



# Swivel seat

September 2014

## Description

Right and left rotation, use-friendly.  
The handle of activation is easily accessible.  
The swivelling base increases the height of the seat by 25 mm.

## Customer benefits

Increased driver comfort, less fatigue.  
Easier reverse driving as well as getting off the truck.



## Activities

All kind of activities requiring repetitive getting on and off the truck and frequent reverse driving.

## Products compatibility



MI-G



MI-D



ME3



ME4

# LPG gauge

September 2014

## Description

Gauge with bright indicator on the dashboard.



## Customer benefits

Avoid the standstill of the truck when running out of gas.  
No loss of productivity.



## Activities

All handling activities on a site equipped with forklift truck fleet with LPG carburation.

## Products compatibility



MI-G

# Gas tank

September 2014

## Description

Tank fixed on deck of the counterweight.  
Various possible volumes according to the machine.  
Equipped with safety device.



## Customer benefits

Higher autonomy.  
Driver comfort: easy refill, avoid repeated handling of heavy cylinders.

## Activities

All handling activities on a site equipped with a gas tank.

## Products compatibility



# Double cylinders support

September 2014

## Description

Support fixed on the counterweight allowing to put 2 gas cylinders.



## Customer benefits

Higher autonomy, better productivity.  
Allow to work with 2 shifts without changing the gas cylinders.



## Activities

All handling activities on a site equipped with gas forklift trucks.

## Products compatibility



MI-G



# 5th electro-hydraulic service

September 2015

## Description

5<sup>th</sup> electro-hydraulic service which is an additional hosing on the existing pulley. Allowing the use of an attachment by a button located on the 4th lever.



## Customer benefits

Versatility of the machine.  
Adapted to the customer's application.

## Activities

Handlings of non standard loads requiring the use of a specific attachment.

## Products compatibility



MI-G



MI-D



ME3



ME4

# Engine cut-off

September 2014

## Description

System planned to automatically cut off the truck engine when left running without a driver during a predetermined time or in an overrun situation.



## Customer benefits

Improved safety around the truck.  
Fuel saving and pollution reduced.  
Protection against engine excessive wear.  
Reduction of engine hours and rental costs.

**Activities** All handling tasks with activity breaks.

## Products compatibility

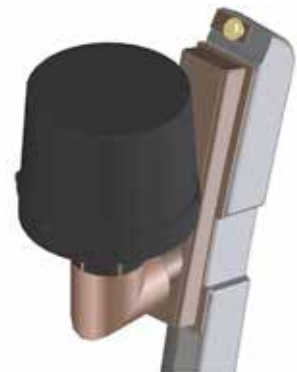


# Prefilter

September 2014

## Description

Simple and fast to install fitted before the primary air filter.



## Customer benefits

Reduction of maintenance cost. The primary air filter remains efficient longer. Extended life and reliability of the engine. Fuel saving and reduced pollution.



## Activities

Dusty atmospheres:  
manufacturing and distribution of  
building materials, foundry, wood  
industries...

## Products compatibility



# Prefilter Turbo 3

September 2014

## Description

Simple and fast to install before the primary air filter. The centrifugal force separates dusts in the air. The system is self-cleaning. The Turbo prefilter retains up to 98 % of the impurities.



## Customer benefits

Reduction of maintenance cost. The primary air filter remains efficient 6-10 times longer. Extended life and reliability of the engine. Fuel saving and reduced pollution.

## Activities

Dusty atmospheres: manufacturing and distribution of building materials, foundry, wood industries...

## Products compatibility



# Drive shaft protection

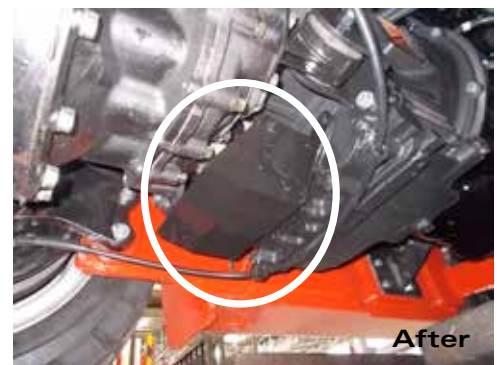
September 2015

## Description

«Belly plate» protecting the drive shaft located under the machine.

## Customer benefits

Avoid any degradation of the drive shaft due to dirty and/or dusty environments.  
Reduced maintenance.



## Activities

Recommended for operations in difficult environments (metal industry, waste recycling...)

## Products compatibility



# Customisation

September 2014

## Description

- 1/ Paint and signage according to customers' specifications.
- 2/ Road homologation for Spain



## Customer benefits

- 1/ Convey the brand image of the customer.
- 2/ Respect of country standards.

## Activities

- 1/ Rental companies, Key accounts
- 2/ Handling activities with standards

## Products compatibility



MI-G



MI-D



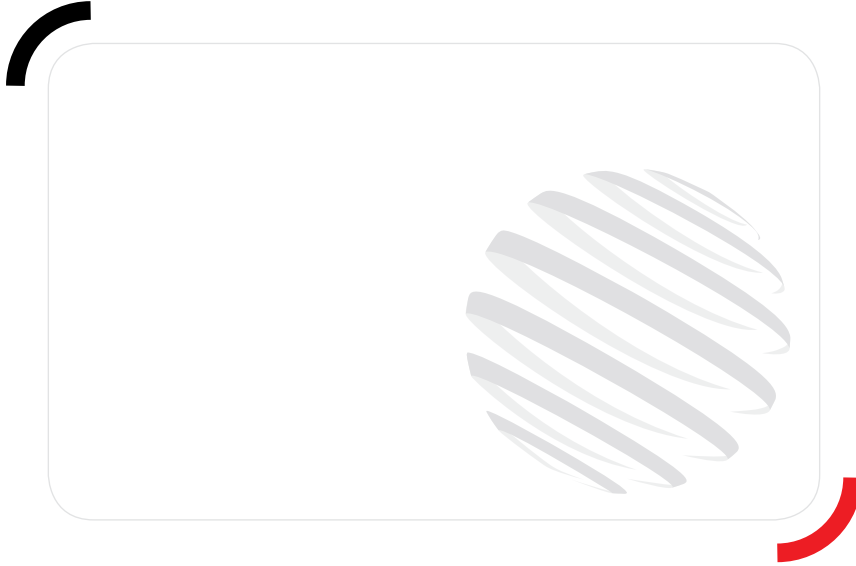
ME3



ME4







**Head office:**

B.P. 249 - 430 rue de l'Aubinière - 44158 Ancenis Cedex - France

Tél : 00 33 (0)2 40 09 10 11 - Fax : 00 33 (0)2 40 09 10 97

[www.manitou.com](http://www.manitou.com)



Cette publication présente le descriptif des versions et possibilités de configuration des produits Manitou qui peuvent différer en équipement. Les équipements présentés dans cette brochure peuvent être de série, en option, ou non disponibles suivant les versions. Manitou se réserve le droit, à tout moment et sans préavis, de modifier les spécifications décrites et représentées. Les spécifications portées n'engagent pas le constructeur. Pour plus de détails, contactez votre concessionnaire Manitou. Document non contractuel. Présentation des produits non contractuelle. Liste des spécifications non exhaustive. Les logos ainsi que l'identité visuelle de l'entreprise sont la propriété de Manitou et ne peuvent être utilisés sans autorisation. Tous droits réservés. Les photos et schémas contenus dans la présente brochure ne sont fournis qu'à des fins de consultation et à titre indicatif.  
MANITOU BF SA - Société anonyme à conseil d'administration - Capital social: 39 547 824 euros - 857 802 508 RCS Nantes