

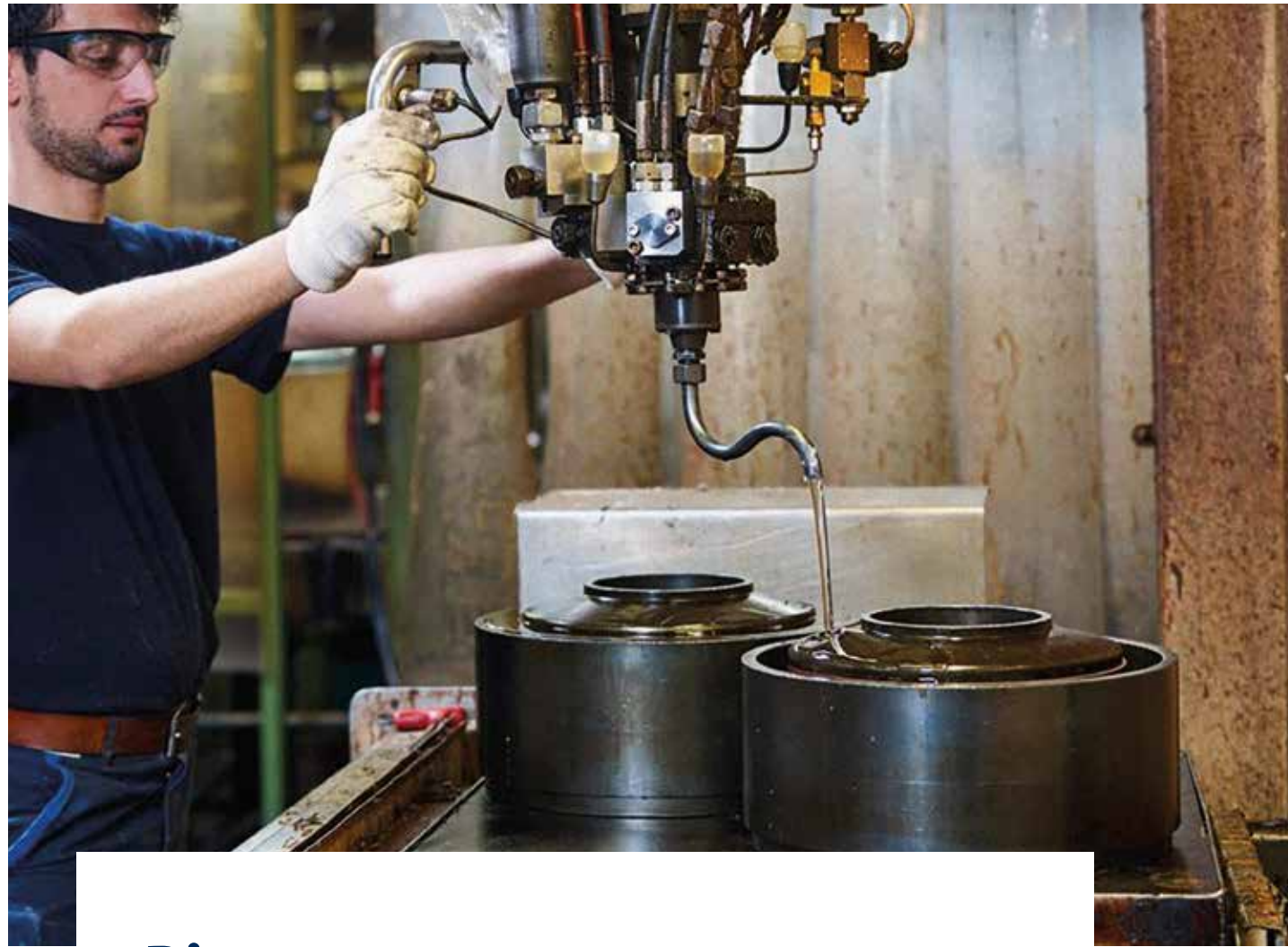


# Technical wheels



**Co-engineering and  
subassembly**

- 50+ years experience in high load & high speed applications
- standard and customised wheels, technical solutions for any machinery
- in-house design, engineering & manufacturing
- simulator facilities
- co-engineering with most important manufacturers
- global delivery



## Discover our...

Discover our materials such as Vulkollan®, Printhopan and Printalon G which withstand high loads, high speeds, abrasion and deformation. Our in-house engineering & testing makes Vulkoprin the ideal partner for any OEM.



## Vulkollan® Desmodur® 15 (NDI) The ultimate elastomer

Vulkoprin produces Vulkollan® in the range of 75 to 95 Shore A. This large range of hardness is one of the reasons why Vulkollan® can be found in almost all technical applications, spanning the gap between rubbers and thermoplastics.

The excellent combination of modulus and elasticity over a very wide temperature range results in wheels with very low rolling resistance and a high load-carrying capacity.



## Custom engineered wheels

- design and engineering support
- top materials for extreme working conditions
- maximum load-capacities & high speed applications
- from diameter 20 mm to 1200 mm

### APPLICATIONS

STACKER  
CRANES



Fastmoving stacker cranes equipped with drive and guide wheels made of Vulkollan®



WATER  
TREATMENT



Water treatment equipment runs on drive wheels made of Vulkollan® with anticorrosion protection.



INDUSTRIAL  
GATES



Custom-made groove wheel for industrial sliding gates.





# Custom engineered wheels

## APPLICATIONS

INDUSTRIAL LIFTS



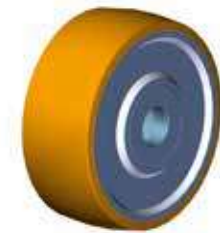
Assembly with concave guide rollers for steel cable in industrial elevators.



HEAVY-LOAD TRANSPORT



Handling of extreme loads with wheels made of Vulkollan®



ROLLERCOASTERS



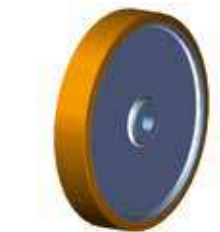
Leading manufacturer in Europe for highspeed rollercoaster wheels.



FORKLIFTRUCKS



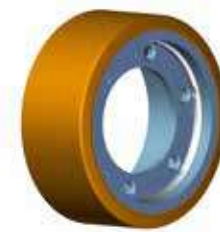
Heavy load 4-way sideloader in the glassindustry with wheels ø 1100 mm.



AUTOMATED GUIDED VEHICLES



Drive wheel for AGV.



ELEVATORS



Guide roller made of Vulkollan® with excentric shaft for elevators



## APPLICATIONS

TUNNEL DRILLING



Heavy load guiding wheels for tunneling and pipelines.



FILTER INSTALLATIONS



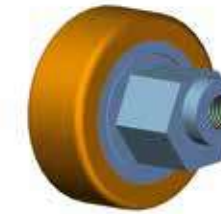
Tilting pan filters use antihydrolysis wheels made of Vulkollan® for phosphate washing.



BAGGAGE HANDLING



Baggage handling with precision guide rollers in airports.



SCREENING DRUMS



Rotating screening drum with heavy load drive wheels made of Vulkollan®



COOLING DRUMS



Cooling drum with drive wheels made of Vulkollan® in cast iron manufacturing.



POTATO HARVESTING



Wheel made of Vulkollan® for chain conveying in potato harvesting.





# Custom engineered wheels

## APPLICATIONS



**HARBOUR CRANES**

Concave shaped guide wheel for cables in harbour cranes.



**DOCKING STATION**

Triple swivel castor for docking systems in airports.



**TUMBLERS**

Tumblers with drive wheels made of Vulkollan® in the meat industry.



**GRAPHIC PRINTING**

Adaptable swivel castor for print finishing equipment.



**WASTE TREATMENT**

Steel welded wheelcentre made of Vulkollan® for waste sorting equipment.



**AUTOMOTIVE SOLUTIONS**

Skidrollers made of Vulkollan® for automotive conveying systems.



For technical documentation:

<https://www.vulkoprin.be/techcorner/>

Table **LEGEND** | • Basic | •• Good | ••• Recommended

Material	VULKOLLAN				PRINTHANE						
	75	80	90	95	Grip	B65	B75	C	X92	X95	X97
Application	VH75	VI80	VK90	VL95	RK90	BF65	BH75	YL95	CK92	CL95	CM97
Manual	•••	•••	•••	•••	-	•••	•••	•••	•••	•••	•••
Driven	•	••	•••	••	•••	•	••	•••	•••	••	••
Heavy load	•	•	••	•••	••	•	•	••	••	•••	•••
Long distance	•	•	•••	•••	••	•	•	•••	•••	•••	•••
Uneven floor	••	••	•••	•	••	••	••	•••	•••	•	•
Wet floor	••	••	••	•	•••	••	•••	••	••	•	•
Noise reduction	•••	•••	••	••	••	••	••	••	••	••	•
Rolling resistance	•	••	•••	•••	••	•	••	•••	•••	•••	•••
Non marking	•••	•••	•••	•••	•	•••	•••	•••	•••	•••	•••
Ambient temperature < 0°C	•	•	••	••	••	•	•	•	•••	••	•••
Ambient temperature > 40°C	••	••	••	••	••	•	•	••	•••	•••	•••
Wear	••	•••	•••	•••	••	••	••	••	•••	••	•••
V-max. lifttruck drive wheel m/s	-	12	25	30	25	-	12	25	30	-	-
V-max. lifttruck load Wheel m/s	-	16	30	40	30	-	16	30	40	-	-
Extreme V	•	•	••	••	••	•	•	••	•••	•••	•••
Hydrolysis resistance	•	•	•	•	•	•	•	•	•••	•••	•••
Electrical conductive ISO2878	-	-	-	-	-	-	-	•••	-	-	-



**Material  
handling  
industry**

**Theme park  
industry**



**Machinery  
industry**

**Maintenance  
& Repair**

